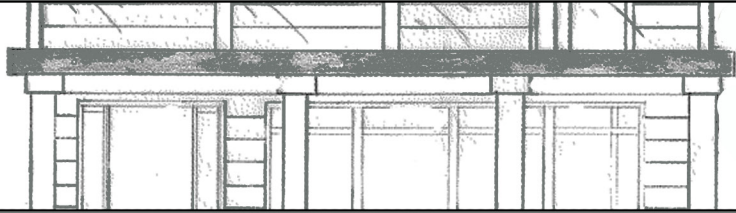


Savannah Turner
Nashville State Community College
A.A.S Architectural Engineering 2015

Table of Contents



Hand Drafted Drawings
Pencil, pen, trace paper



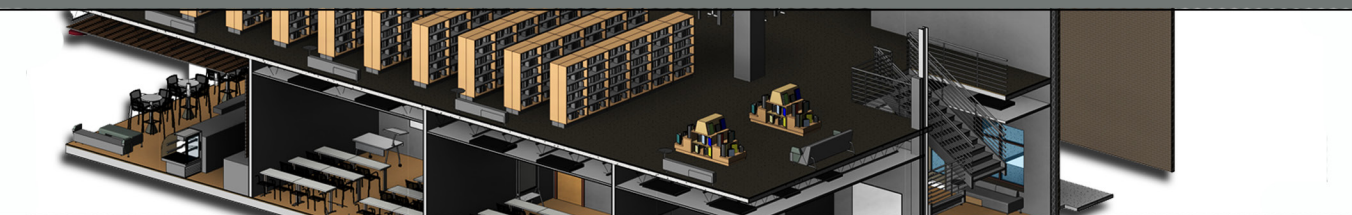
Residential Design
AutoCad, Photoshop



Residential Design in Revit
Revit



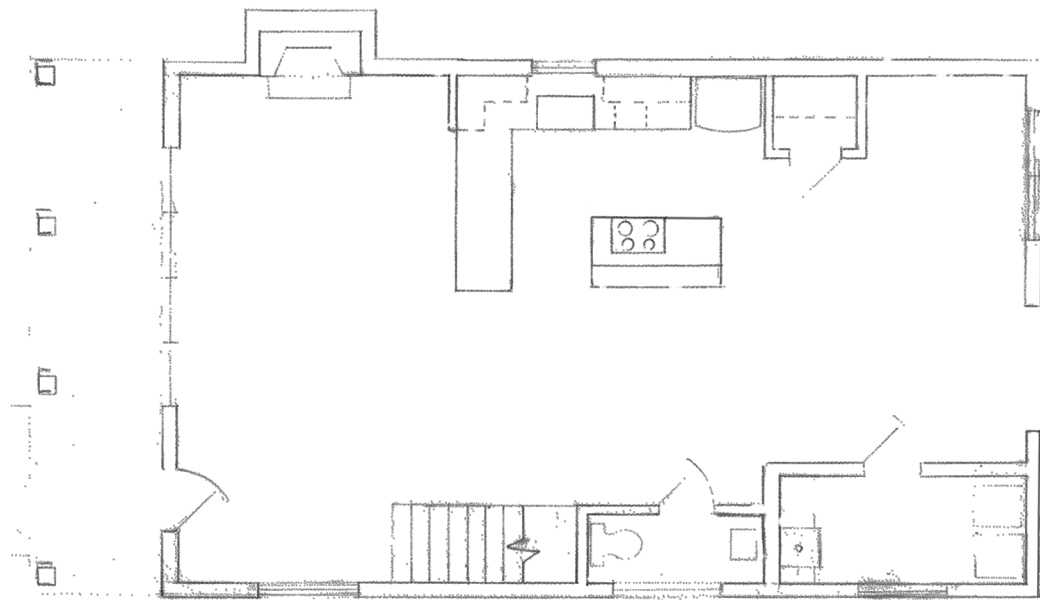
Water Feature
Pencil, Sketch Up



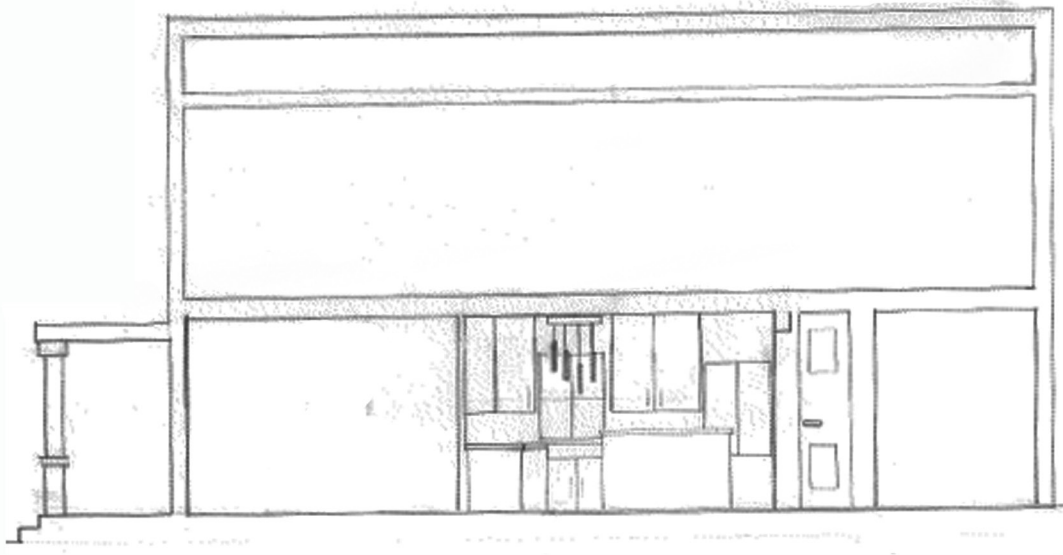
Library Addition
Revit, Photoshop

Hand Drafting

Hand drafting is slowly becoming a trade of the past and being replaced with more advanced software programs such as Revit and AUTOCAD. This project was to outline the importance of hand drafting and how it shapes each drawing. We were not just drawing floor plans but learning the importance of line weight, hierarchy and the relationships they create with in a drawing. Hand drafting allows you the freedom to create without the stress of being limited by your knowledge or the capacity of a software program. It also becomes a vital tool, in the class room as well as the office to communicate your ideas and negotiate between instructor/ clients.



Floor Plan

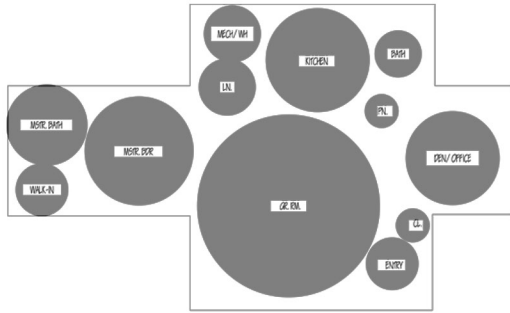


Section View



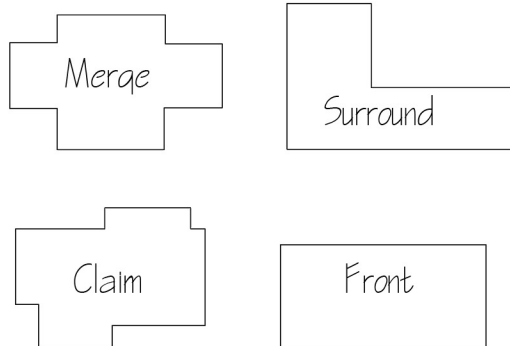
Front Elevation

Residential Design



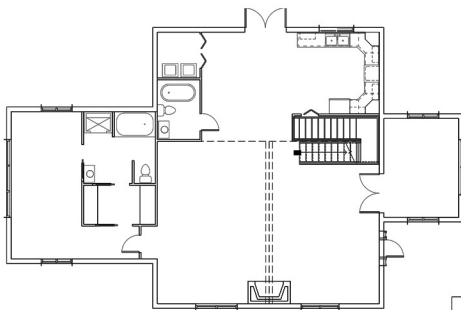
Schematic design with spatial representation.

The initial phase of design is schematic design. During this stage the general scope, rough sketches and functional relationships are established. This is represented by a general foot print containing rough square footages of each desired room.

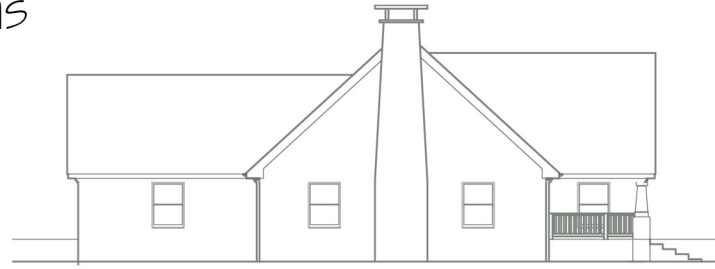
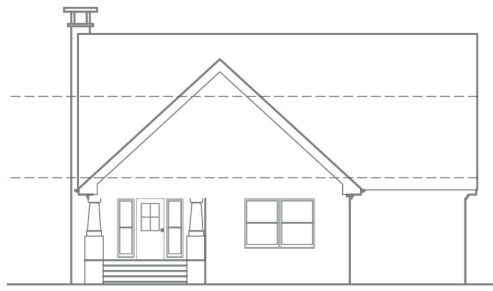


Four design concepts

Part of schematic design is coming up with a general foot print of your structure. These foot prints can follow one of the four design concepts: Merge, Surround, Claim or Front.



In the final stage of schematic design sketches and concepts are presented to the client for approval. This insures that the architect has interpreted the needs and desires of the client appropriately. Floor plans will be reviewed and changed if necessary.



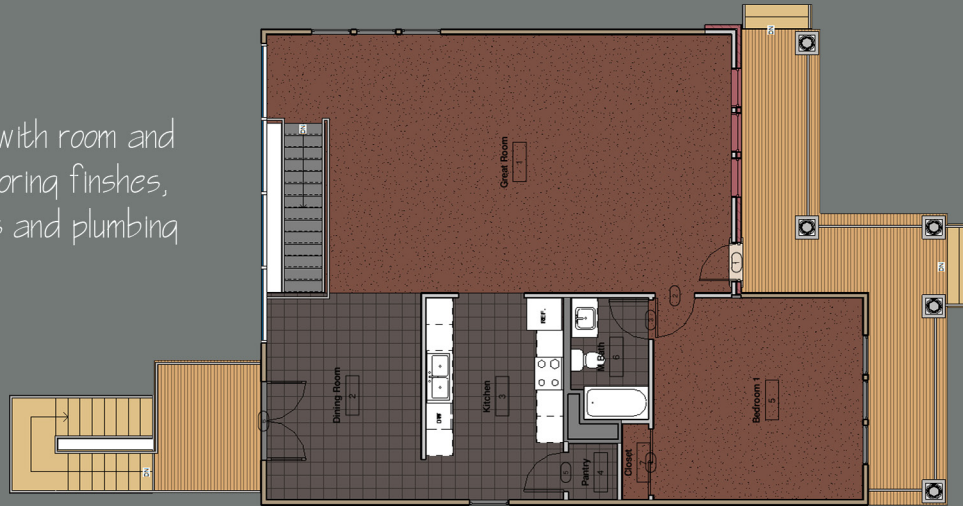
Elevations

The Residential Design project gave us an in depth look into designing a home. We were able to follow the process of schematic design, design development and construction documents.



Residential Design

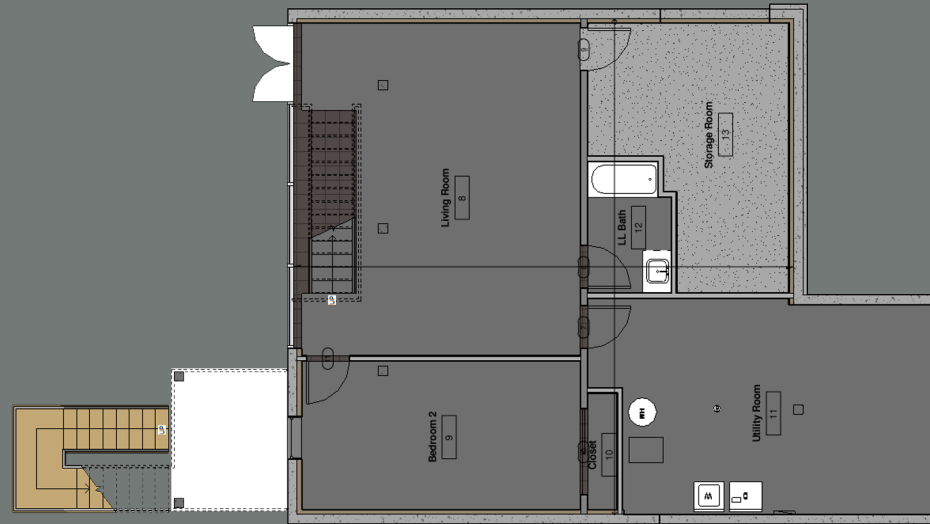
1st floor plan with room and door tags, flooring finishes, base cabinets and plumbing fixtures.



Front view of the home complete with footings and poured walls



in Revit



Basement plan with room and door tags, flooring finishes, and plumbing fixtures.



Rear view of the home showcasing the floor to ceiling windows and deck.



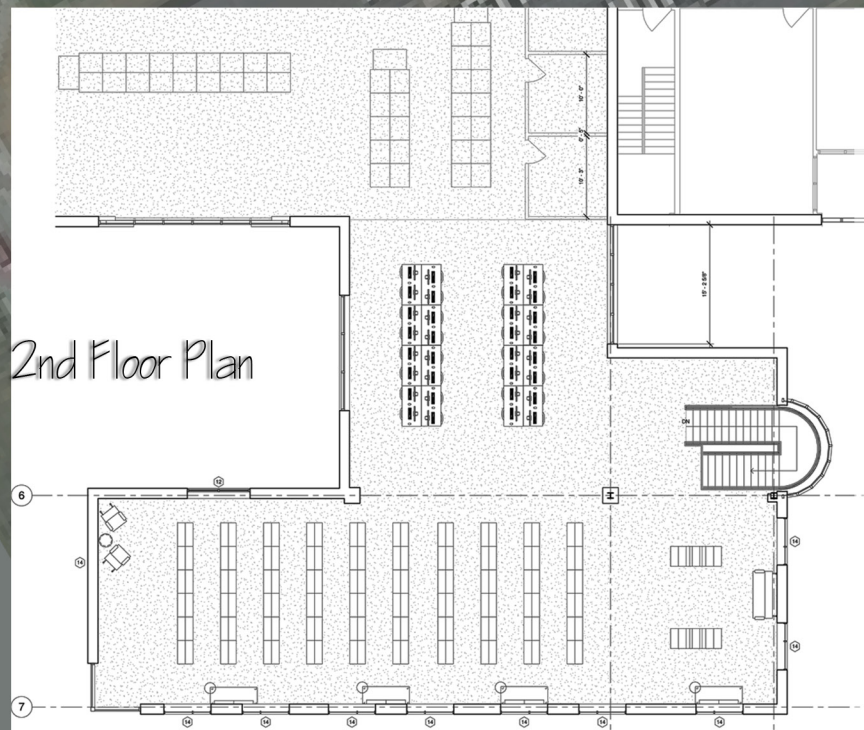
Kisber Plaza Water Feature

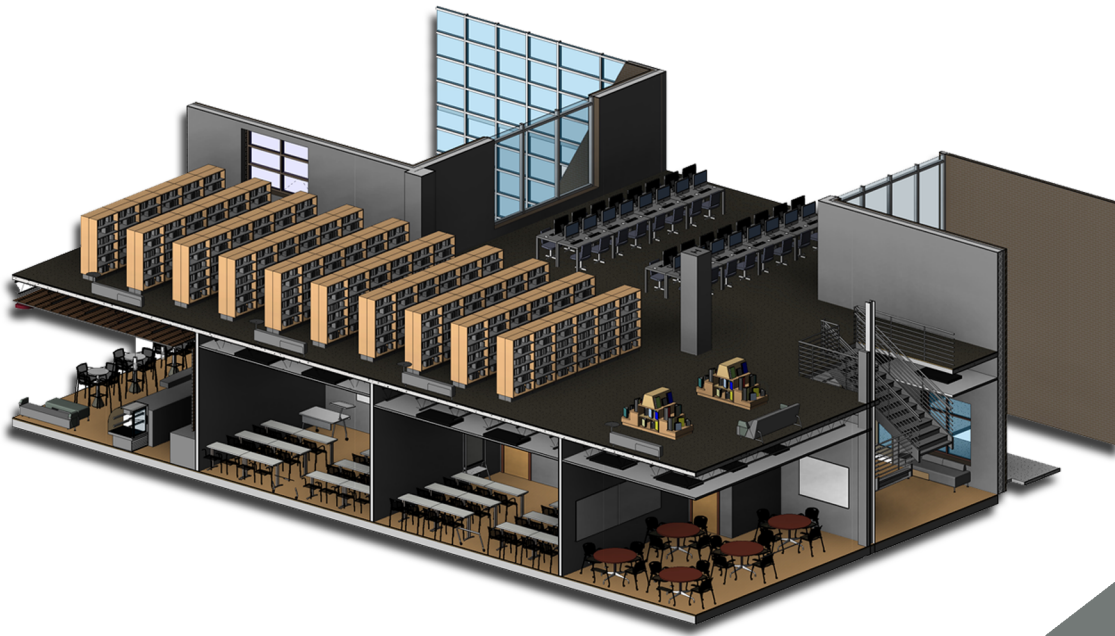
This project utilized the open space here on campus to bring out the creativity and vision the students have. This concept design is a water feature and sitting area. The goal was to bring a cool shaded sitting area as well as a visual appeal.



K

JANE G. KISBER
MEMORIAL BUILDING





Now that the student center has been built and the testing center relocated, the library has the opportunity to create an innovative and inviting area for students to learn, study and interact. The additions proposed in this presentation include, a writing workshop and offices for the learning center, three interactive classrooms for presentations, multi-media projects and collaborative workspaces and incorporates a coffee commons with additional research stations upstairs as well as more space for the library's collection.