

The diagram in Figure 1 appears in the book *Woodworker's 39 Sure-Fire Projects*. It is the front view of a corner bookcase/desk. Find the height of the bookcase/desk from the floor to the top of the writing surface.

We must add the following measures (in the figure, " means inches):

$$\frac{3}{4}, 4\frac{1}{2}, 9\frac{1}{2}, \frac{3}{4}, 9\frac{1}{2}, \frac{3}{4}, 4\frac{1}{2}.$$

We begin by changing  $4\frac{1}{2}$  to  $4\frac{2}{4}$  and  $9\frac{1}{2}$  to  $9\frac{2}{4}$ , since the common denominator is 4.

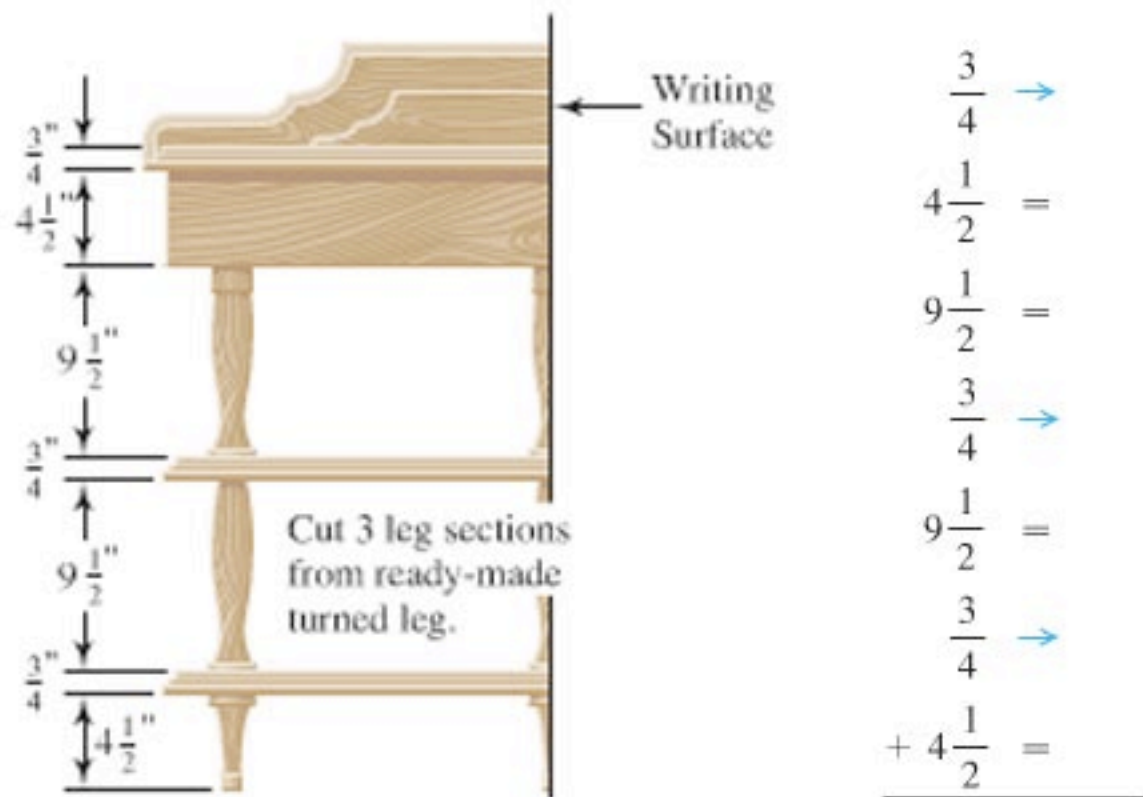


FIGURE 1